

NO IMAGE  
AVAILABLE

Twin-Cath® 20/22 Multiple-Lumen  
Peripheral Catheter

TWO-LUMEN INTRAVENOUS SET

SKU / Article #: IV-01100-X

Highlights

CE Mark

Considerations

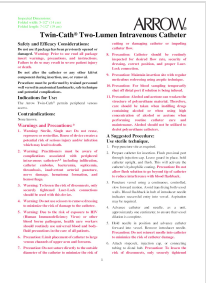
Not made with natural rubber latex.

Sales Quantity/Case: 25

Representative photo(s): actual product specifications may vary from that shown in the photo

Twin-Cath® 20/22 Multiple-Lumen Peripheral Catheter SKU / Article #: IV-01100-X	
Quantity	Component Description
1	Catheter: 18 Ga. x 1-3/4" (4.5 cm) Radiopaque over 22 Ga. RW Needle
1	Dust Cap: Non-Vented

Documents



The products in this catalog may not be available in all countries. Please contact your local representative.

Indications, contraindications, warnings and instructions for use can be found in the Product Instructions for Use available under the Documents section on this page, where an IFU is available.

