

Pressure Injectable Arrowg+ard Blue Plus® Four-Lumen CVC

PI CVC KIT: 4-L 8.5 FR X 20 CM AGB

SKU / Article #: CDC-45854-XP1A

Highlights

Antimicrobial: Arrowg+ard Blue Plus*
Sharps Safety

Considerations

*Chlorhexidine
Not made with natural rubber latex.
Includes Lidocaine
±Precaution: Contains Phthalate: DEHP

Sales Quantity/Case: 5

Representative photo(s): actual product specifications may vary from that shown in the photo

Pressure Injectable Arrowg+ard Blue Plus® Four-Lumen CVC	
SKU / Article #: CDC-45854-XP1A	
Quantity	Component Description
1	Arrowg+ard Blue Plus® ¹ Four-Lumen Catheter: 8.5 Fr. (3.0 mm OD) x 20 cm, Pressure Injectable
1	Spring-Wire Guide, Nitinol, Marked: .032" (0.81 mm) dia. x 23-5/8" (60 cm) (Straight Soft Tip on One End - "J" Tip on Other) with Arrow® GlideWheel™ Wire Advancer
1	Catheter: 18 Ga. x 2-1/2" (6.35 cm) Radiopaque over 20 Ga. RW Introducer Needle
1	Injection Needle: SafetyGlide™ ² 25 Ga. x 1" (2.54 cm)
1	Blunt Fill Needle: 18 Ga. x 1-1/2" (3.81 cm)
1	Pressure Transduction Probe
1	Introducer Needle: Echogenic 18 Ga. x 2-1/2" (6.35 cm) XTW and 5 mL Arrow® Raulerson Spring-Wire Introduction Syringe
1	Injection Needle: SafetyGlide™ ² 22 Ga. x 1-1/2" (3.81 cm) and 5 mL Luer-Slip Syringe
1	Syringe: 3 mL Luer-Lock
1	Tissue Dilator: 10 Fr. (3.5 mm) x 10.2 cm

Pressure Injectable Arrowgard Blue Plus Four-Lumen CVC

SKU / Article #: CDC-45854-XP1A

Quantity	Component Description
4	10 mL Luer-Lock Pre-Filled Saline Syringe
1	5 mL 1% Lidocaine HCl Solution and Alcohol Prep
2	3 mL Applicator 2% CHG and 70% IPA Chloraprep ^{®3} One-Step Solution with Hi-Lite Orange [™] Tint
1	SecondSite [™] Adjustable Hub: Fastener
1	SecondSite [™] Adjustable Hub: Catheter Clamp
1	SharpsAway [®] II Locking Disposal Cup
1	SharpsAway [®] Disposal Cup
1	Maximal Barrier Drape [™] with 4" fenestration
1	Towel
1	Needle Holder
1	Safety Scalpel: #11
1	Checklist/CLIP Sheet
1	Sterile Procedure Sign
1	Medication Label: 1% Lidocaine
2	Gauze Pad: 2" x 2" (5 cm x 5 cm)
5	Gauze Pad: 4" x 4" (10 cm x 10 cm)
1	Surgical Apparel: Impervious Gown
1	Dressing: I.V. Advanced 8.5 cm x 11.5 cm
1	Dressing: BIOPATCH ^{®4}
1	Transducer Cover: 14 cm x 14.7 cm
1	Surgical Apparel: Mask with Eye Shield
1	Surgical Apparel: Bouffant Cap
1	Suture: 3-0 Silk with Curved Needle
1	Tubing±: 20" (50 cm) Extension
1	HemoHopper [®] Fluid Receptacle

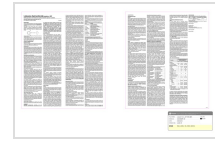
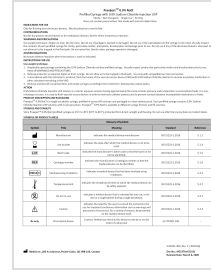
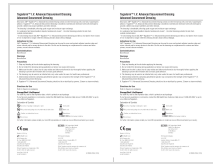
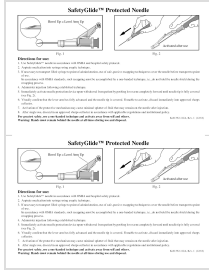
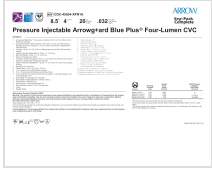
¹ Licensed under US Patent No. 7,329,412.

² A trademark of Becton, Dickinson and Company.

³ A registered trademark of CareFusion or one of its subsidiaries.

⁴ A registered trademark of Johnson & Johnson Corporation.

Documents



SCROLL TO VIEW MORE →

The products in this catalog may not be available in all countries. Please contact your local representative.

Indications, contraindications, warnings and instructions for use can be found in the Product Instructions for Use available under the Documents section on this page, where an IFU is available.