



*Representative photo(s): actual product specifications may vary from that shown in the photo*

## Arrowg+ard Blue® Two-Lumen Hemodialysis Catheterization for High Volume Infusions

### AHDC AGB CURVED KIT: 2-L 14 FR X 20 CM

SKU / Article #: CDC-25142-XN1A-C

### Highlights

Antimicrobial: Arrowg+ard Blue\*  
Sharps Safety

### Considerations

\*Chlorhexidine  
Not made with natural rubber latex.  
Includes Lidocaine  
±Precaution: Contains Phthalate: DEHP

### Sales Quantity/Case: 5

#### Arrowg+ard Blue® Two-Lumen Hemodialysis Catheterization for High Volume Infusions SKU / Article #: CDC-25142-XN1A-C

Quantity	Component Description
1	Two-Lumen Catheter, Curved: 14 Fr. (4.72 mm OD) x 20 cm Radiopaque Polyurethane with Blue FlexTip®, Arrowg+ard® Antimicrobial Surface Treatment, Extension Line Clamps
1	Spring-Wire Guide, Marked: .035" (0.89 mm) dia. x 23-5/8" (60 cm) (Straight Soft Tip on One End - "J" Tip on Other) with Arrow® GlideWheel™ Wire Advancer
1	Catheter: 18 Ga. x 2-1/2" (6.35 cm) Radiopaque over 20 Ga. RW Introducer Needle
1	Injection Needle: SafetyGlide™1 25 Ga. x 1" (2.54 cm)
1	Blunt Fill Needle: 18 Ga. x 1-1/2" (3.81 cm)
1	Pressure Transduction Probe
1	Introducer Needle: Echogenic 18 Ga. x 2-1/2" (6.35 cm) XTW and 5 mL Arrow® Raulerson Spring-Wire Introduction Syringe
1	Injection Needle: SafetyGlide™1 22 Ga. x 1-1/2" (3.81 cm) and 5 mL Luer-Slip Syringe

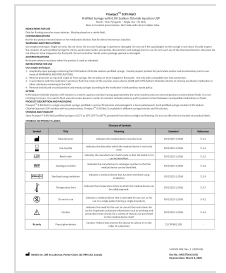
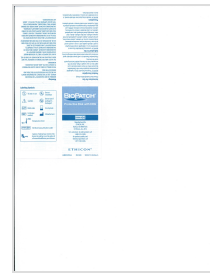
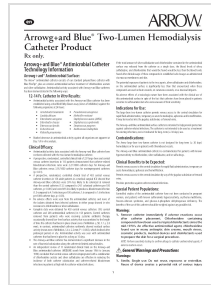
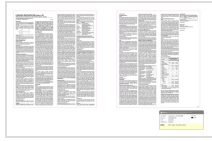
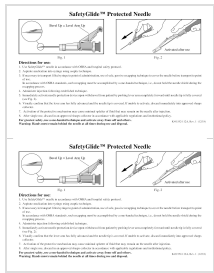
Arrowgard Blue Two-Lumen Hemodialysis Catheterization for High Volume Infusions  
 SKU / Article #: CDC-25142-XN1A-C

Quantity	Component Description
1	Syringe: 3 mL Luer-Lock
1	Tissue Dilator: 14 Fr. (4.7 mm) x 14 cm
1	Tissue Dilator: 12 Fr. (4.0 mm) x 14 cm
2	10 mL Luer-Lock Pre-Filled Saline Syringe
1	5 mL 1% Lidocaine HCl Solution and Alcohol Prep
2	3 mL Applicator 2% CHG and 70% IPA Chloraprep <sup>®2</sup> One-Step Solution with Hi-Lite Orange™ Tint
1	SharpsAway <sup>®</sup> II Locking Disposal Cup
1	SharpsAway <sup>®</sup> Disposal Cup
1	Maximal Barrier Drape™ with 4" fenestration
1	Towel
1	Needle Holder
1	Safety Scalpel: #11
1	Checklist/CLIP Sheet
1	Sterile Procedure Sign
1	Medication Label: 1% Lidocaine
2	Gauze Pad: 2" x 2" (5 cm x 5 cm)
5	Gauze Pad: 4" x 4" (10 cm x 10 cm)
1	Surgical Apparel: Impervious Gown
1	Dressing: I.V. Advanced 8.5 cm x 11.5 cm
1	Dressing: BIOPATCH <sup>®3</sup>
1	Transducer Cover: 14 cm x 147 cm
1	Surgical Apparel: Mask with Eye Shield
1	Surgical Apparel: Bouffant Cap
1	Suture: 3-0 Silk with Curved Needle
1	Tubing±: 20" (50 cm) Extension
1	HemoHopper <sup>®</sup> Fluid Receptacle

<sup>1</sup> A trademark of Becton, Dickinson and Company.

<sup>2</sup> A registered trademark of CareFusion or one of its subsidiaries.

# Documents



SCROLL TO VIEW MORE →

The products in this catalog may not be available in all countries. Please contact your local representative.

Indications, contraindications, warnings and instructions for use can be found in the Product Instructions for Use available under the Documents section on this page, where an IFU is available.